



**Auckland, New Zealand  
28th November to 8th December 2019**

**The Organising Authority is Yachting New Zealand in  
conjunction with the International 49er and Nacra 17 Class  
Associations**

New Zealand is precious, and everyone who lives and travels here has a responsibility to look after it. By following the Tiaki Promise, you are making a commitment to New Zealand. To act as a guardian, protecting and preserving our home. During the online registration you will be asked to accept the Tiaki Promise. See [www.tiakinewzealand.com](http://www.tiakinewzealand.com)

Nau mai, haere mai ki Aotearoa. Welcome to New Zealand.



# NOTICE OF RACE

[NP] denotes a rule that shall not be grounds for protests by a boat. This changes RRS 60.1(a).

[DP] denotes a rule for which the penalty is at the discretion of the International Jury.

[SP] denotes a rule for which a standard penalty may be applied by the race committee without a hearing or a discretionary penalty applied by the International Jury with a hearing

## 1. RULES

- 1.1 The regatta will be governed by the rules as defined in *The Racing Rules of Sailing*.
- 1.2 RRS Appendix P, *Special Procedures for Rule 42*, will apply
- 1.3 For the Medal Race, World Sailing Addendum Q (as posted on the official notice board) takes precedence over any conflicting instructions.
- 1.4 The Class Rules will apply except for any that are altered by the Notice of Race or the Sailing Instructions. The Class Race Management Guidelines will also apply.
- 1.5 The Yachting New Zealand Prescriptions will not apply except for the Prescription that applies to RRS67, which prescribes that:
  - 1.5.1 Findings of fact, and decisions of protest committees, shall be relevant only for the purposes of the World Sailing Racing Rules of Sailing.
  - 1.5.2 Any issue of liability or claim for damages arising from an incident while a boat is bound by The Racing Rules of Sailing shall be subject to the jurisdiction of the courts and not considered by a protest committee.
  - 1.5.3 A boat that retires from a race or accepts a penalty, does not by that action alone admit liability.
- 1.6 The Yachting New Zealand Safety Regulations shall not apply except for:
  - 1.6.1 Section 11: Boats shall carry their sail number on the port and starboard sides of the hull, in clearly distinctive letter and figures at least 50mm high. The Organising Authority will supply the stickers.
  - 1.6.2 Section 12: Each boat trailer or cradle shall be clearly marked with the class and sail number of the boat using it. Tags will be supplied by the Organisers.
- 1.7 This is a World Sailing 200 point ranking event .

## 2. ADVERTISING

- 2.1 Boats may be required to display advertising chosen and supplied by the Organising Authority.
- 2.2 For 49er and 49erFX - the bottom two panels of the jib area shall be restricted to Class and Event advertising and all competitors shall place class nominated branding on their jibs according to the World Sailing approved 49er Class jib advertising policy. For Nacra 17 - the area of the jib, except for the visibility window, shall be restricted to Class and Event advertising and all competitors shall place class nominated branding on their jibs according to the World Sailing approved Nacra 17 Class jib advertising policy.

### 3. ELIGIBILITY AND ENTRY

- 3.1 Competitors shall comply with World Sailing Eligibility Code (Regulation 19).
- 3.2 Olympic gender requirements will apply for each of the Olympic Events.
- 3.3 All competitors shall be fully paid-up members of the International 49er or Nacra 17 Class Associations.
- 3.4 Entry and payment should be received by the Organising Authority no later than 29 September 2019 to qualify for the early entry fee and will only be accepted after 10 November 2019 at the discretion of the Class Executive and with the payment of the additional late fee.
- 3.5 Competitors can enter and pay the fee by visiting;  
<http://49er.org/event/2019-world-championship/#noticeboard> or  
<http://nacra17.org/events/2019-world-championship/#noticeboard>

### 4. ENTRY FEES (in Euro)

|                    | Early Entry<br>(before 29 Sep) | Entry<br>(30 Sep – 9 Nov) | Late Entry<br>(from 10 Nov) |
|--------------------|--------------------------------|---------------------------|-----------------------------|
| 49er and 49erFX    | 400                            | 450                       | 570                         |
| Nacra 17           | 815                            | 865                       | 985                         |
| Coach Boat         | 90                             | 150                       |                             |
| Official Supporter |                                | 50                        |                             |

### 5. FORMAT OF RACING.

- 5.1 The Championships will consist of an Opening Series and a Medal Race. The Opening Series will be divided into a Qualifying Series and a Fleet Racing Series.
- 5.2 The Medal Race will be a single, double points race and will be detailed further in the Sailing Instructions.

### 6. SCHEDULE OF EVENTS

|                              |             |   |
|------------------------------|-------------|---|
| 6.1 Monday 11 November       |             | Venue opens   |
| Thursday 28 November         | 0900 - 1700 | Registration/Nacra Inspection   |
|                              | 1700        | Nacra 17 Class Forum  |
|                              | 1800        | Nacra 17 AGM  |
| Friday 29 November           | 0900 - 1700 | Registration/49er Inspection  |
|                              | 1800        | 49er Class Forum  |
| Saturday 30 November         | 0900 - 1700 | Registration/Inspection   |
|                              | 1800        | 49er Class AGM  |
| Sunday 1 December            | 0900 - 1100 | Additional Measurement  |
|                              | 1730        | Opening Ceremony  |
| Monday 2 December            | 1100        | Competitor Briefing   |
| Day 1 - Tuesday 3 December   | 1100        | Qualifying Races  |
| Day 2 - Wednesday 4 December | 1100        | Qualifying Races  |
| Day 3 - Thursday 5 December  | 1100        | Qualifying Races  |
| Day 4 - Friday 6 December    | 1100        | Fleet Races   |
| Day 5 - Saturday 7 December  | 1100        | Fleet Races   |
| Day 6 - Sunday 8 December    | 1100        | Fleet Races & Medal Races   |
|                              |             | Prize Giving and Closing Ceremony as soon as possible after the Medal Races |

- 6.2 On Sunday 8 December there will be no warning signal after 1400 for those taking part in the Final Fleet Races and after 1730 for those taking part in the Medal Races.

## 7. MEASUREMENT

- 7.1 All boats shall be inspected for class rules compliance prior to racing, according to the Schedule of Events. Additional spot measurement checks may be carried out during the Championship.
- 7.2 For 49er, 49erFX, and Nacra 17 only one set of sails and one forestay shall be used throughout the duration of the Championship.
- 7.3 Equipment shall only be replaced with permission of the Technical Committee.

## 8. SAILING INSTRUCTIONS

The Sailing Instructions will be available on the Event website and at registration.

## 9. VENUE

The 2019 49er, 49erFX and Nacra 17 World Championships will be held at the Hyundai Marine Sports Centre which incorporates the facilities of the Royal Akarana Yacht Club, 8 Tamaki Drive, Okahu Bay 1071, Auckland, New Zealand.

For Container shipping: as above

For mailing/shipping please send to: as above

For email contact: [Auck49erNacraWorlds@gmail.com](mailto:Auck49erNacraWorlds@gmail.com)

## 10. THE COURSES

Courses will be;

For 49er and 49erFX - windward/leeward with a gate at the leeward end of the course.  
For Nacra 17 - windward/leeward with a spreader mark at the windward end and a gate at the leeward end of the course.

## 11. PENALTY SYSTEM

RRS 44.1 and RRS P2.1 are changed so that the Two-Turns penalty is replaced by a One-Turn penalty.

## 12. SCORING

- 12.1 The Low Points Scoring System of RRS Appendix A will apply.
- 12.2 At least 5 races are required to be completed to constitute the Championship.

## 13. SAFETY

In the event of an emergency the meeting point for safety personnel and the dropping off point for safety boats coming from the racing area will be the ramp alongside the Royal Akarana Yacht Club. This meeting point will be where an ambulance will be waiting when required. The location of the Emergency Meeting Point is shown in Attachment B.

## 14. SUPPORT BOATS

- 14.1 Support boats shall be registered with the Organising Authority and will be required to comply with local legislation and the Class Support Boat Regulations which can be viewed on the Class website. Team leaders/coaches shall register at <http://49er.org/event/2019-world-championship/#noticeboard> or <http://nacra17.org/events/2019-world-championship/#noticeboard> and complete on-site registration at the race office at the venue.
- 14.2 All support boats shall clearly display the 3 letter national code of their WS Member National Authority at all times while afloat. The minimum height for the letters shall be 200mm.
- 14.3 If called upon, support boats will be required to act as rescue boats.

## 15. INTERNATIONAL JURY

An International Jury will be appointed in accordance with RRS 91(b). Its decisions will be final as provided in RRS 70.5

## 16. PRIZES

Prizes for the Championships will be announced and awarded at the end of the Medal Races for:

- World Championship - 1st to 10th
- Silver fleet - 1st to 3rd
- Bronze fleet - 1st to 3rd (if applicable)
- First Place Under 23 age group

## 17. RADIO COMMUNICATION

Except in an emergency a boat shall neither make nor receive radio transmissions, text messages or cellular phone calls while racing.

## 18. INSURANCE

Each participating boat shall be insured with valid marine third-party liability insurance with a minimum cover of at least NZL\$1,000,000 (or equivalent) per incident. Certificate of insurance is to be presented at registration. The Organising Authority can supply suitable insurance if required for NZL\$95+gst per boat for 49er and 49erFX and \$120+gst per boat for Nacra 17 payable at online registration.

## 19. RISK STATEMENT

RRS 4 of the Racing Rules of Sailing states: "The responsibility for a boat's decision to participate in a race or to continue racing is hers alone."

Sailing is by its nature an unpredictable sport and therefore inherently involves an element of risk. By taking part in the event, each competitor agrees and acknowledges that:

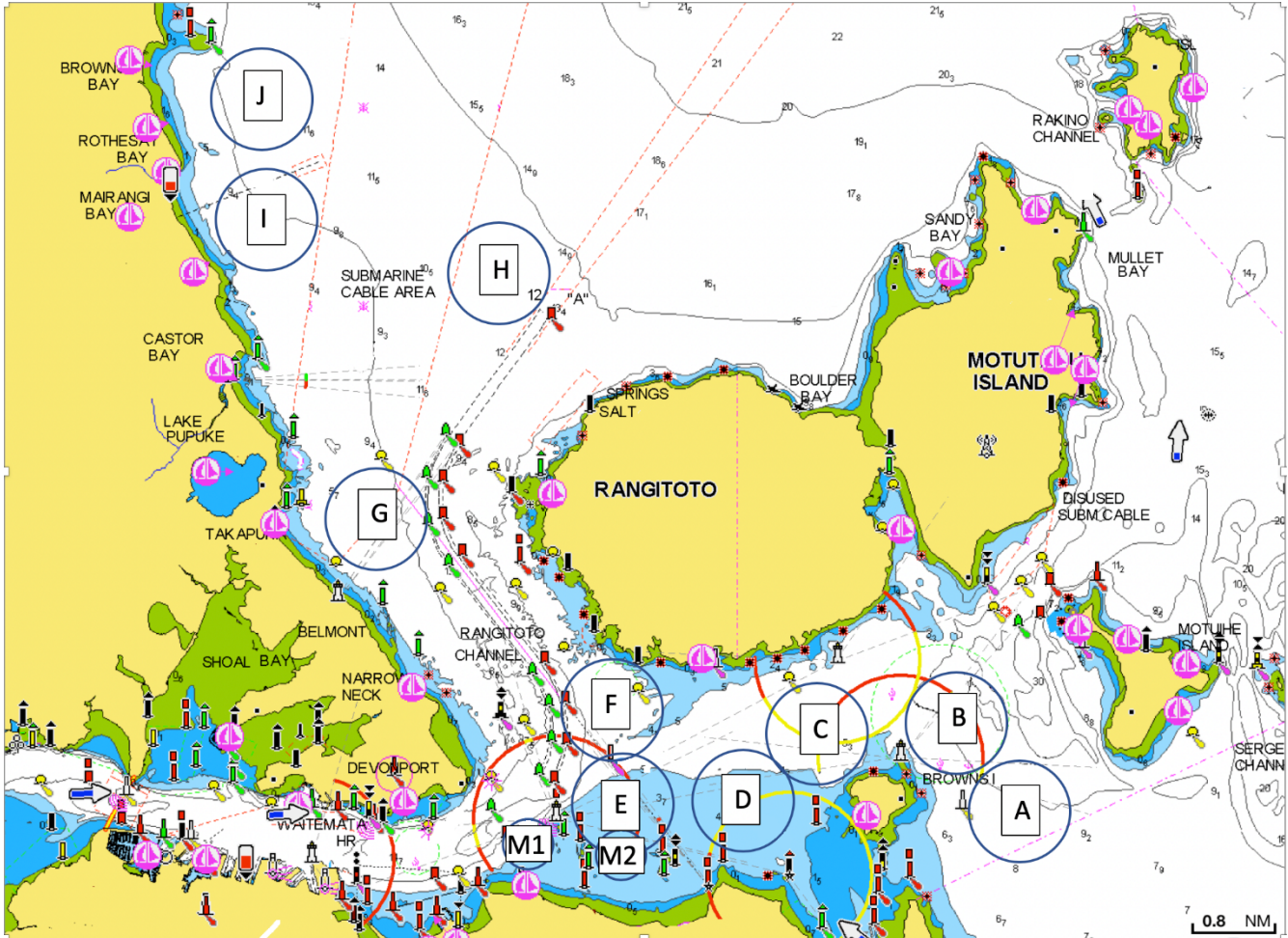
- a) They are aware of the inherent element of risk involved in the sport and accept responsibility for the exposure of themselves, their crew and their boat to such inherent risk whilst taking part in the event;
- b) They are responsible for the safety of themselves, their crew, their boat and their other property whether afloat or ashore;

- c) They accept responsibility for any injury, damage or loss to the extent caused by their own actions or omission;
- d) Their boat is in good order, equipped to sail in the event and they are fit to participate;
- e) The provision of a race management team, patrol boats and other officials and volunteers by the event organiser does not relieve them of their own responsibilities;
- f) The provision of patrol boat cover is limited to such assistance, particularly in extreme weather conditions, as can be practically provided in the circumstances.
- g) It is their responsibility to familiarise themselves with any risks specific to this venue or this event drawn to their attention in any rules and information produced for the event and to attend any safety briefing held for this event.

## **20. MEDIA RIGHTS, CAMERAS AND ELECTRONIC EQUIPMENT**

- 20.1 Where consent for imagery has been given by a competitor participating in the Championship, competitors grant to the Organising Authority, the International 49er and the Nacra 17 Class Associations and their sponsors, the right in perpetuity to make, use and show, from time to time at their discretion, any motion pictures and live, taped or filmed television and other reproductions of the athlete during the period of competition without compensation.
- 20.2 Boats may be required to carry cameras, sound equipment or positioning equipment as specified by the Organising Authority.
- 20.3 Competitors may be required for interviews and press conferences at the Championship.

### ATTACHMENT A - RACING AREA



Up to four course areas will be chosen each day depending on wind speed and direction.

**ATTACHMENT B - EMERGENCY MEETING POINT**

