

2023 SAIL SYDNEY NOTICE OF RACE Invited Classes – Part B



9 – 15 December 2023

Incorporates the 2023 Australian National Windfoiling and Kitefoiling Championships

Woollahra Sailing Club (WSC) Organising Authority

**With support from New South Wales partner clubs:
Royal Sydney Yacht Squadron (RSYS) and Georges River Sailing Club (GRSC)**

Rev 1.1

2023 Sail Sydney Olympic and Invited Classes regatta will be held on Sydney Harbour and Botany Bay between 9 – 18 December 2023. Woollahra Sailing Club (WSC) acknowledges that we are on the land of the Birrabirragal people, the traditional custodians of the land. We pay our respects to Elders past, present and emerging.

The Organising Authority is Woollahra Sailing Club Ltd.

1. Rules

- 1.1 The Regatta will be governed by the rules as defined in The Racing Rules of Sailing (RRS).
- 1.2 No National Prescriptions will apply.
- 1.3 RRS Appendix P Special Procedures for RRS 42 will apply.
- 1.4 RRS Appendix T will apply
- 1.5 RRS Appendix B Windsurfing and RRS Appendix F Kite boarding racing rules will apply
- 1.6 The use of helmets for Catamarans (conforms to EN1385 or EN1077) for both helm and crew is mandatory when afloat.
- 1.7 The use of helmets shall be used by Foiling Boards while racing.
- 1.8 Harbour control regulations laid down by the RMS (NSW Maritime) Authority will apply. These are available on the event website www.sailsydney.org and in the Sailing Instructions.
- 1.9 If there is a conflict between languages, the English text shall take precedence.
- 1.10 [DP] denotes a rule for which the penalty is at the discretion of the Protest Committee. This changes RRS 64..
- 1.11 [SP] denotes a rule for which a standard penalty may be applied by the Race Committee or Technical Committee without a hearing. This changes RRS A5.
- 1.12 [NP] denotes a rule that shall not be grounds for protests by a boat. This changes RRS 60.1(a).

2. Sailing Instructions

- 2.1 Sailing Instructions will be available from 1700 hrs 1 December 2023

3. Communications

- 3.1 The event will operate a [virtual Notice Board](#) to reduce congregation. All race documents will be available on the Official virtual notice board
- 3.2 [DP] While racing, from the first warning signal until the end of the last race of the day, except in an emergency, a boat shall not make voice or data transmissions and shall not receive voice or data communication that is not available to all boats.

4. Eligibility and Entry

- 4.1 All competitors shall be a current member of a club affiliated with Australian Sailing or World Sailing Member National Authority (MNA).
- 4.2 The regatta is open to all boats as detailed in the Event Schedule NOR Attachment "A" below.
- 4.3 Competitors and support vessels shall enter by completing the online entry form on the event website, available via www.sailsydney.org and paying the required fees. Online entry opens on 15 September 2023; late entry fee applies after midnight 30 November 2023.
- 4.4 For competitors under 18 years of age, a parent (or guardian) shall acknowledge and agree to the Entry Declaration via the online entry system at the time of entry.
- 4.5 All Windsurfing and Kitefoiling sailors shall be entered be members of the Class Association to be eligible for the Australian Class Nationals.
- 4.6 The Organising Authority may cancel or make other arrangements for a class of boat if the minimum number of

2023 - NOTICE OF RACE – Part B Invited classes

entries (10) ten in any class have not been received by midnight (local time), 30 November 2023. Affected competitors will be notified of cancelled or rearranged classes by email and posting on the event website. The entry fees for cancelled classes will be refunded.

5. Fees

5.1 Fees are stated in Australian currency (AUD) and include any local taxes (GST), but exclude any booking and credit card merchant fees detailed in the online entry system. Entry fees are outlined in the Event Schedule NOR Attachment “A”.

5.2 If any entry is cancelled by the competitor, the Entry Fee will be refunded as follows.

Cancellation Date	Entry Fee Refund
Before or on the 1 November 2023	100%
After 1 November and before November 2023	50%
Ater 14 November 2023	0%

6 [NP] [DP] Advertising

Boats may be required to display advertising chosen and supplied by the Organising Authority.

7. Schedule

7.1. The Registration/Regatta Office for Competitors and Support Persons will be open as per the Schedule NOR Attachment “A”.

7.2. An electronic online registration and competitor briefing may be introduced. If you wish to make changes to your registration, email regattas@woollahrasailingclub.org.au

7.2 Competitors will receive confirmation of their registration one week before the Event for competitors to check details. Any change please email regattas@woollahrasailingclub.org.au. If you have not received confirmation one week per to the Event please email regattas@woollahrasailingclub.org.au.

7.3 Registration shall be completed prior to the start of your first scheduled race.

7.4 The first briefing for all competitors and support persons will take place via Zoom as per the Event Schedule NOR Attachment “A”

7.5 The first warning signal for any fleet will not be made before 1100hrs on their first scheduled day of racing. On the last day of racing, no warning signal will be made after 1700 hours.

8. [NP] [DP] Equipment Inspection

8.1 Boats and equipment may be subject to inspection at any time during the regatta to ensure compliance with the Rules.

9. Venue

The regatta will be conducted at Woollahra Sailing Club and George’s River Sailing Club. Racing areas are shown at NOR Attachment “B”.

10. Courses

The format, courses to be sailed and the class allocation to the racing areas will be detailed in the Sailing Instructions. Classes may be divided into groups for racing. The decision of the Organising Authority will be final.

11. Penalty System

11.1 RRS Appendix P, Special Procedures for Rule 42, will apply as modified. RRS2.3 will not apply and RRS P2.2 is changed so that it will apply to any penalty after the first one.

11.2 For the, Nacra 17, Nacra 15, 49er, 49er FX, and 29er classes, RRS 44.1 and RRS P2.1 are changed so that the Two-Turns penalty is replaced by a One-Turn penalty.

12. Scoring

- 12.1 Three (3) races are required to be completed to constitute a series.
- 12.2 The maximum number of races is in Attachment “A”.
- 12.3 When fewer than five races have been completed, a boat’s series score will be the total of her race scores.
- 12.4 When five or more races have been completed, a boat’s series score will be the total of her race scores, excluding her worst score.
- 12.5 Divisions within fleets will be scored using the overall fleet placings.

13. [NP] [DP] Support Person Vessels

- 13.1 All support person vessels shall register for the Event via the [official website](#). The Organising Authority may refuse registrations and accept late registrations at their discretion.
- 13.2 Support person vessels shall comply with local legislation, including the safety equipment to be carried and conditions under which lifejackets shall be worn. Kill cords must be used when the motor is operating. A copy of the regulations is available at [safety-equipment-for-powered-vessels](#) and [life jackets -devices](#).
- 13.3 Support person vessels shall familiarise themselves with RRS 37, Search and Rescue Instructions.
- 13.4 All support person vessels shall keep at least 50m to leeward of the start line and its extensions between the preparatory signal and the start signal and more than 50 metres clear of any competing boat or mark of the course, between the start signal and the finish of the last boat, except when asked by the race committee to enter the course area or assist competitors.
- 13.5 All support person vessels are required to carry a working VHF radio to monitor the advised frequency.

14. Berthing

- 14.1 Boats shall be kept in their assigned places either in the dinghy park or as described by the Organising Authority during registration and check-in.
- 14.2 Trailers shall not be left within the boat park during the regatta. All trailers may be stored in the areas designated by the Organising Authority. Any trailers left within the boat park may be moved/relocated at the discretion of the Organising Authority.

15. Risk Statement

RRS 3 states: ‘The responsibility for a boat’s decision to participate in a race or to continue to race is hers alone.’ By participating in this Event each competitor agrees and acknowledges that sailing is a potentially dangerous activity with inherent risks. These risks include strong winds and rough seas, sudden changes in weather, failure of equipment, boat handling errors, poor seamanship by other boats, loss of balance on an unstable platform and fatigue resulting in an increased risk of injury. **Inherent in the sport of sailing is the risk of permanent, catastrophic injury or death by drowning, trauma, hypothermia or other causes.**

16. Risk Warning

This Risk Warning is issued jointly by Woollahra Sailing Club and RMS (NSW Maritime), pursuant to the Civil Liability Act 2002 to all persons wishing to participate in the sailing activities conducted by Woollahra Sailing Club.

Participants are warned that, regardless of the precautions, which might be taken by reasonable and experienced persons, sailing can be a dangerous pursuit and participants are exposed to a significant risk of property damage, physical harm and possibly death.

As an indication, these risks may include, but are not limited to:

- (a) The extremes of weather and sea conditions.
- (b) The potential that control of vessels may be lost, resulting in a collision with objects and other vessels.
- (c) The sudden movement of the vessel at any time and the possibility that participants may fall or be thrown overboard, resulting in drowning.
- (d) The possibility that participants may be injured by equipment on the vessel.
- (e) The absence of immediate medical care and the likelihood that significant delays may occur before medical care is available.
- (f) Exposure to the elements for extended periods.

Woollahra Sailing Club and RMS (NSW Maritime) also warn participants that regardless of their best intentions, they may be unable to render assistance to participants who are in distress. Participants are warned to consider the above risks and all other risks before deciding to participate in any sailing event in the Sail Sydney Regatta.

17. Prizes

- 17.1 Medals will be awarded to the top 3 boats in each class. The Organising Authority may alter prizes if less than 10 boats are entered in a class.
- 17.2 Additional Prizes: At the discretion of the Organising Authority.

18. Insurance

- 18.1 Each participating boat shall be insured with a valid third-party liability insurance with a minimum cover of AUD \$5,000,000 (recommended \$10,000,000) (or equivalent) per incident or the equivalent.
- 18.2 The Organising Authority may request a copy of the Certificate of Currency.
- 18.3 Third Party and Boat Insurance can be purchased via [Network Marine](#)

19. Media Rights

- 19.1 Participants at this Event automatically grant to the Organising Authority and the sponsors of the Event, the right in perpetuity to make use and show from time to time and at their discretion, any motion pictures, still pictures and live, taped or film television and other reproductions of them during the period in which they participate, and in all material related to the Event without compensation.
- 19.2 Competitors may be required for media interviews or press conferences at the regatta.

20. Amendments

- 20.1 Any amendment to this Notice of Race will be posted on the website: <https://www.sailsydney.org/competitor-information/regatta-documents/>
- 20.2

21. Further Information

For further information please contact:

Woollahra Sailing Club (WSC)

Location: 2 Vickery Avenue, Rose Bay NSW 2029

Contact: Sailing Manager – 61 2 9371 9805

Email: regattas@woollahrasailingclub.org.au

Access to facilities: For early arrivals, please contact WSC. Competitors requiring access and use of the club outside of this should contact WSC directly



SAIL SYDNEY

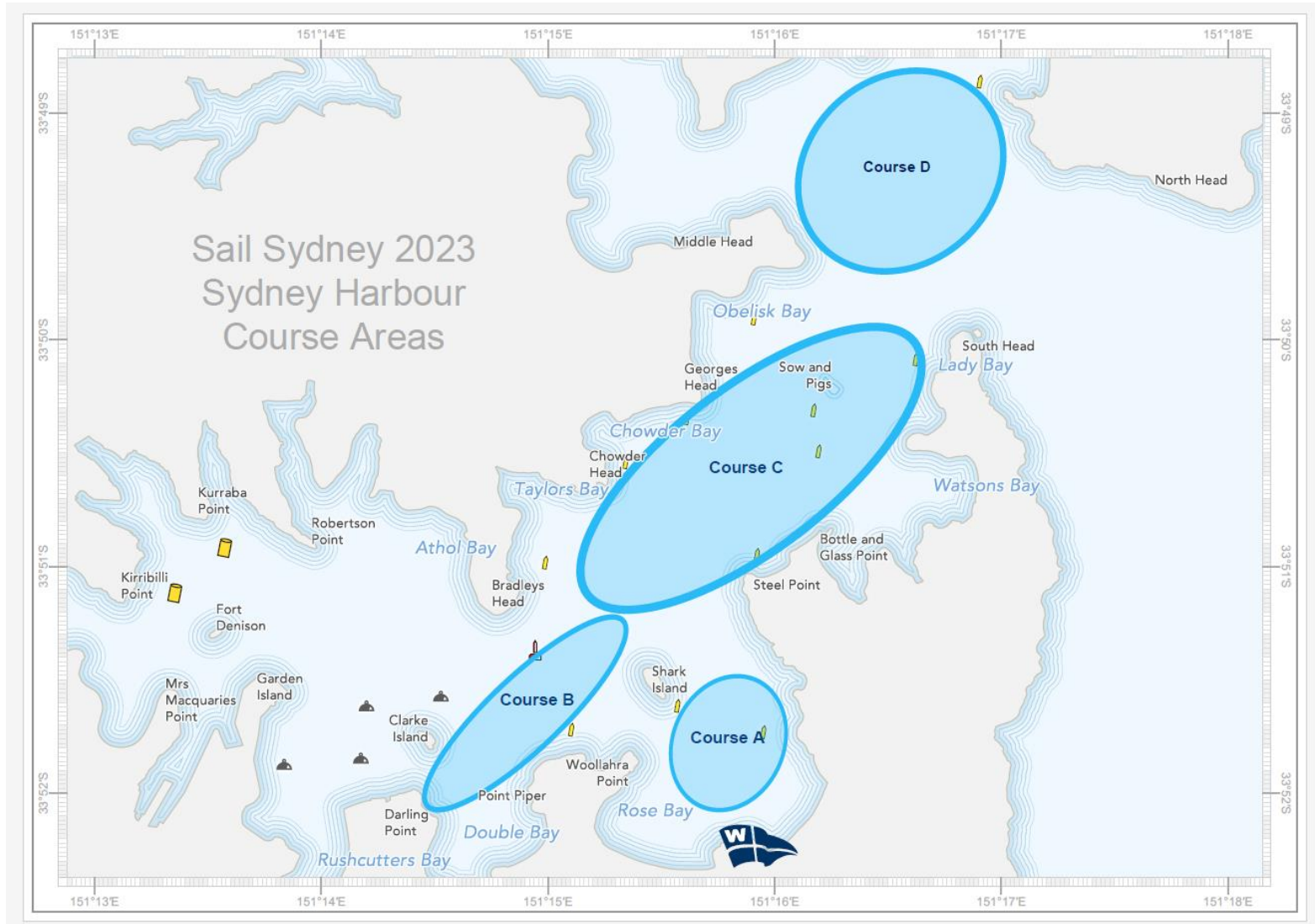
2023 - NOTICE OF RACE – Part B Invited Classes

Attachment A – Event Schedule V2

Preliminary Event Schedule			Entry Fee AUD	Sch No. of Races	Location	Sat 9-Dec	Sun 10-Dec	Mon 11-Dec	Tues 12-Dec	Wed 13-Dec	Thur 14-Dec	Fri 15-Dec	Sat 16-Dec	Sun 17-Dec	Mon 18-Dec	
Registration/Regatta Office Open																
Competitor Briefing online																
Olympic Registration/Equip Declaration																
Coaches Briefing																
Presentation																
Olympic Classes																
	Men's Windsurfing - IQFOIL	\$400	20 + Medal Series			0900 hrs	1700 hrs			1700 hrs						
	Women's Windsurfing - IQFOIL	\$400	20 + Medal Series			GRSC	WSC									
	Men's Kitefoiling	\$400	16 + Medal Series					1000 hrs	TBC	TBC	TBC	TBC	TBC	TBC	TBC	TBC
	Women's Kitefoiling	\$400	16 + Medal Series													
	Men's Dinghy - ILCA 7	\$400	10 + Medal Race													
	Women's Dinghy - ILCA 6	\$400	10 + Medal Race													
	Men's Skiff - 49er	\$500	12 + Medal Race													
	Women's Skiff - 49er FX	\$500	12 + Medal Race													
	Mixed Dinghy - 470 Mixed	\$500	10 + Medal Race													
	Mixed Multihull - Nacra 17	\$500	12 + Medal Race													
Invited Classes																
	Wind Foiling Open	\$400	20													
	iQFOIL Youth	\$400	20													
	Kitefoiling Open	\$400	16													
	49er FX Open	\$500	12													
	Optimist Open	\$150	6													
	Optimist Intermediate	\$150	6													
	Green Fleet	\$150	6													
	ILCA 6 OPEN	\$300	10													
	Int. 29er	\$400	12													
	Nacra 15	\$400	12													
	Int. 420	\$400	10													
	ILCA 4	\$300	10													
	ILCA 6 OPEN	\$300	10													
	Sabot 1 Up	\$150	6													
	Sabot 2 Up	\$150	6													
	O'pen Skiff	\$150	6													
	Flying 11	\$200	6													
	Finn	\$160	6													
	Ok Dinghy	\$160	6													
	Tasar	\$200	6													
	RS Aero	\$160	6													
	Waszp	\$160	6													
	Wing Foiling Exhibition	\$100	6													
	Late Entry Fee from 1st December	\$100														
	Support Vessel	\$30														
Race Officials																
	PRO/CRO Race Mangement Briefings					1800 hrs				0900 hrs		0930 hrs				

* Late Entry Fee applies as per NOR * Schedule of Race times to be updated once Sailing Instructions become available

Attachment B – Course Race Areas - Sydney Harbour



Attachment B – Course Race Area Botany Bay

