

Nacra17 European Championships

**From 5 to 10 November 2024
Palermo, Sicily**

Sailing Instructions



1. RULES

- 1.1. The event will be governed by the rules as defined in The Racing Rules of Sailing (RRS).
- 1.2. For Umpired Fleet Racing, RRS Appendix UF Umpired Fleet Racing Nacra17 European Championships Edition available in SI Addendum A will apply.
- 1.3. For Match Racing races, RRS Appendix C Match Racing Rules will apply.
- 1.4. RRS 40.1 will apply at all times while afloat.
- 1.5. RRS Appendix T Arbitration will apply.

2. CHANGES TO SAILING INSTRUCTIONS

- 2.1. Any change to the Sailing Instructions will be posted no later than two hours before the first scheduled race on the day it will take effect, except that any change to the schedule of races will be posted by 20:00 on the day before it will take effect.

3. COMMUNICATION WITH COMPETITORS

- 3.1. The official notice board is on-line at <https://nacra17.org/event/2024-european-championship/#noticeboard>.
- 3.2. The VHF channel to be used for the race committee broadcasts is channel 69.
- 3.3. The Race Office is located at "Casa Quarara", Via Scalo Sferacavallo.
- 3.4. On the water, the Race Committee may broadcast information available to all coaches on VHF radio channel 69, including starting and safety information. Failure to make broadcasts will not be grounds for redress. This changes RRS 62.1(a).
- 3.5. Competitors and support persons may listen to the voice/video recording(s) and review the written records of their finishes. For this purpose, the race officer will be available in the race office until the end of the protest time limit.
- 3.6. From 7th November, there will be a daily competitors briefing in Casa Quarara terrace. See the schedule in SI 6.1.

4. CODE OF CONDUCT

- 4.1. [DP] Competitors and support persons shall comply with reasonable requests from race officials.
- 4.2. [DP] Competitors and support persons shall handle any equipment or place advertising provided by the organizing authority with care, seamanship, in accordance with any instructions for its use and without interfering with its functionality.

5. SIGNALS MADE ASHORE

- 5.1. Signals made ashore will be displayed from the official flag pole placed on the roof of the Race Office, "Casa Quarara".
- 5.2. [DP][NP][SP] Flag D displayed ashore with one sound signal this means: "the warning signal will be made not less than 30 minutes after flag D is displayed or not before the scheduled time. Boats shall not leave their allocated berth until this signal is made".

6. SCHEDULE

- 6.1. The event schedule will be as follows:

DATE	TIME	EVENT
5 th November Day 0	0900 - 1400	Registration
	1400	1 st warning signal - Practice Race
	1700	Competitors briefing and Opening Ceremony
6 th November Day 1		
	1100	1 st warning signal – 3 races
7 th November	0930	Competitors Briefing



Day 2	1100	1 st warning signal – 3 races
8 th November	0930	Competitors Briefing
Day 3	1100	1 st warning signal – 3 races
9 th November	0930	Competitors Briefing
Day 4	1100	1 st warning signal – 3 races
10 th November Day 5	0930	Competitors Briefing
	1100	1 st warning signal – 1 umpired fleet race Match racing races (2 maximum)
		Closing ceremony
		Prize Giving

- 6.2. The RC intends to race 3 races per day.
- 6.3. If in the opinion of RC the Event is behind schedule or likely to fall behind schedule, 4 races may be raced in one day.
- 6.4. On Sunday 10 November there will be no warning signal after 1400 for the umpired fleet race and after 1700 for those taking part in the Match Racing races.

7. FORMAT OF RACING

- 7.1 The regatta will consist of an Opening series and a Final Series (Addendum C).

8. CLASS FLAG

- 8.1. For windward/leeward course, the Class Flag will be the class insignia on a yellow background.
- 8.2. For reaching courses the class flags will be the class insignia on a background of the colour of the appropriate fleet, yellow or blue.

9. COURSES

- 9.1. The diagram in SI Addendum B shows the course, including the approximate angles between legs, the order in which marks are to be passed, and the side on which each mark is to be left.
- 9.2. No later than the warning signal, the race committee signal vessel will display the approximate compass bearing from the race committee signal vessel to Mark1.
- 9.3. There will be a gate at the leeward end of the courses.
- 9.4. For LA2 course: there will be a spreader mark at the windward end at the course.
- 9.5. In case of a missing mark at a gate, the remaining mark should be rounded, leaving the mark to port. This changes RRS 28.1 and RRS 34.

10. MARKS

A vessel that is a mark may not be anchored, but held in place by the use of an engine. This will not be grounds for request of redress, provided the vessel remains close to her correct position. This changes RRS 60.1(b).

Name	Description of Mark:	Mark Colour
Mark 1	Robotic mark	Pink
Mark 1A	Robotic mark	Pink
Gate 2s	Robotic mark	Pink
Gate 2p	Robotic mark	Pink





Change mark	Inflatable mark	Yellow
Starting marks	Race Committee staff at the starboard end and a staff or a pink robotic mark at the port end	
Finishing Marks	L, LA and RR courses: Race Committee staffs RD course: Marks 2s and 2p: pink robotic marks	

11. THE START

- 11.1. The starting line is between race committee staffs displaying orange flags on the starting marks or between a race committee staff displaying an orange flag at the starboard end and the course side of a mark (described in SI 10) at the port end of the line.
- 11.2. [DP] Boats whose warning signal has not been made shall avoid the starting area.
- 11.3. To alert boats that a race or sequence of races will begin soon, the orange starting line flag will be displayed with ONE sound signal not less than TWO minutes before the warning signal is displayed.
- 11.4. [DP] Reaching start: a buoy may be attached behind the race committee vessel. Boats shall not pass between this buoy and the race committee starting vessel at any time.
- 11.5. [DP] A buoy may be attached to the race committee starting vessel anchor line just below daggerboard depth. Boats shall not pass between this buoy and the race committee starting vessel at any time. This buoy is part of the race committee starting vessel ground tackle.
- 11.6. A boat that does not start within four (4) minutes after her starting signal will be scored Did Not Start (DNS) without a hearing. This changes RRS A4, A5.1 and A5.2.

12. CHANGE OF COURSE

- 12.1. To change the next leg of the course, the Race Committee may (a) lay a new mark, (b) move the finishing line, or (c) move the leeward gate. When a new mark is laid, the original mark will be removed as soon as possible.
- 12.2. When using robotic marks: The position of any mark(s) may be adjusted by up to plus or minus 10 degrees relative to previous location and up to approximately 200 meters to windward or leeward without signalling a change of course.
- 12.3. If a change of course is signalled and mark 1 is replaced, mark 1A may not be laid.
- 12.4. Except at a gate, boats shall pass between the Race Committee vessel signalling the change of the next leg and the nearby mark, leaving the mark to port and the Race Committee vessel to starboard. This changes RRS 28.
- 12.5. Any action or non-action by the race committee under SI 12 will not be grounds for redress under RRS 62.1(a).

13. THE FINISH

- 13.1. L, LA and RR courses: the finishing line will be between the staffs displaying blue flag.
- 13.2. RD course: the finishing line will be at the gate between the course side of the marks 2s and 2p (described in SI 10). A RC boat will be anchored near one the mark 2s or 2p to sight the finishing line.
- 13.3. [DP][SP] Finishing Exclusion Zone: no boats shall enter the Finishing Exclusion Zone within 100 meters of the finishing line other than boats that are finishing who shall leave the zone immediately.

14. PENALTY SYSTEM

- 14.1. Penalties for breaches of NOR 16 (Insurance), RRS 41, RRS 50.1, RRS 78, the Equipment Inspection Regulations, the Class Rules and rules in the Notice of Race and Sailing Instructions marked [DP], are at the discretion of the International Jury.
- 14.2. Breaches of rules in the SIs marked [NP] will not be grounds for a protest by a boat. This changes RRS 60.1(a).
- 14.3. For breaches of the SIs marked [SP], the race committee may apply a standard penalty without a hearing. A list of these breaches and the associated standard penalties will be posted on the Official Notice Board. However, the race committee may



protest a boat when they consider the standard penalty to be inappropriate. A boat that has been penalised with a standard penalty can neither be protested for the same incident by another boat nor can another boat request redress for this race committee action. This changes RRS 60.1, 63.1 and Appendix A5

15. TIME LIMITS AND TARGET TIME

- 15.1. Windward/Leeward courses: the time limit and target times for fleet racing are as follows:

Time limit: 45 minutes

Finish window: 15 minutes if 10 knots or more and 20 minutes if less than 10 knots.

Target time: 30 minutes

- 15.2. Reaching start courses: the time limit and target times for fleet racing are as follows:

Time limit: 35 minutes

Finish window: 10 minutes if 10 knots or more and 15 minutes if less than 10 knots.

Target time: 20 minutes

- 15.3. The time limit and target times for Match Racing races are as follows:

Time limit: 30 minutes

Finish window: 5 minutes.

Target time: 15 minutes

- 15.4. Boats that do not finish within time limit (the time after the first boat sails the course and finishes) will be scored DNF without a hearing. This changes RRS 35, A4 and A5.

- 15.5. Failure to meet the Target Time will not be grounds for redress. This changes RRS 62.1.

16. PROTESTS AND HEARING REQUESTS

- 16.1. The protest time limit is 60 minutes after the last boat has finished the last race of the day or the Race Committee signals no more racing today, whichever is later.

- 16.2. Hearing and protests requests shall be submitted via the on-line system <https://nacra17.org/event/2024-european-championship/#noticeboard>.

- 16.3. Notices will be posted on the official notice board no later than 30 minutes after the protest time limit to inform competitors of hearings in which they are parties or named as witnesses. Hearings will be held in the Jury room, at the Club House in Via Plauto 27. Hearings may be scheduled to begin up to 30 minutes before the protest time limit.

- 16.4. The Race committee, Technical Committee or International Jury intending to protest a boat under RRS 60.2, 60.3 or 62.4 will comply with RRS 61.1(b) by informing her by posting a notice before the end of the protest time limit.

- 16.5. The time and location of arbitration meetings under Appendix T will be posted on the official notice board.

- 16.6. Breaches to Sailing Instructions marked [NP] will not be grounds for a protest by a boat. This changes RRS 60.1(a).

- 16.7. A list of boats that have been penalised under RRS Appendix P on the water or have been disqualified by the International Jury will be posted on the Official Notice Board.

- 16.8. RRS 66.2(a) is changed so that it applies to the last day of racing of each series and the time limit in RRS 66.2(a)(2) is changed to 20 minutes.

- 16.9. On the last day of racing of each series, a request for redress from a decision of the International Jury shall be delivered no later than 20 minutes after the decision was posted. This changes RRS 62.2.

- 16.10. The time limit for requests under RRS N1.4(b) is 5 minutes after a party is informed of a decision.





17. INTERNATIONAL JURY

Decisions of the International Jury will be final as provided in RRS 70.5.

18. SCORING: See NoR

19. SAFETY [NP]

- 19.1. [SP] Boats not leaving the shore for the day's races shall notify the race office as soon as possible.
- 19.2. When the race committee displays flag V with one sound, all support vessels shall monitor the race committee communication channel for rescue instructions.

20. EQUIPMENT AND MEASUREMENT CHECKS

- 20.1. Replacement of helm, crew or equipment shall require written approval of the PRO.

21. OFFICIAL VESSELS

- 21.1. Official boats will be identified as follows:

Boat	Flag / Letters
Race Committee boats	RC
Jury boats	J
Umpire boats	J
Media boats	P
Safety boats	SF

22. SUPPORT VESSELS [DP] [NP]

- 22.1. Team leaders, coaches and other support personnel shall not be in the area where boats are racing or within 100 metres of any boat racing from the time of the preparatory signal for the first fleet to start until all boats have finished or the race committee signals a postponement, general recall or abandonment. This SI does not apply during rescue operations.
- 22.2. At all times while on water, support vessels shall display either their national flag on a staff with the top of the hoist minimum 1.5 m above water level or their national code letters (minimum height 200mm) on the outside of the hull or on the side of the outboard motor cover.
- 22.3. Support vessels shall comply with the Class Support Vessel Regulations enclosed in Addendum D.
- 22.4. All support vessels are at all times subject to the Organising Committee and Race Authority and must comply with any instructions given by these authorities.
- 22.5. The International Jury may direct the Organising Authority to revoke privileges from any boat or person found to be in breach of SI 21.
- 22.6. Support vessels shall always be on the outside of the media boats (away from the fleet side) so that the media boats can capture images without coach boats in the image. This does not apply during any safety incident.

23. IDENTIFICATION [DP] [NP]



- 23.1. Boats will be required to affix the stickers provided by the Organising Authority on both sides of the forward 25% of the hull, 200mm from the bow. Boats shall affix the stickers in accordance with any instructions given by the Organising Authority.
- 23.2. Provided two or more races have been completed, from Thursday, November 7th onwards, each day while racing, the sailors of the first, second and third boats in series ranking at the beginning of the day shall wear yellow, blue, and red bibs respectively. These bibs will be available each day at the morning briefing of the day and shall be returned by competitors as soon as possible after the day's racing.

24. CAMERAS AND ELECTRONIC EQUIPMENT [NP] [SP]

- 24.1. Boats may be required to carry on board cameras, sound equipment or positioning equipment as specified by the Organising Authority. Competitors may also use their own camera recording equipment and attachments, but these are to be removable for weighing. A boat shall not be given redress based on a claim involving this equipment. This changes RRS 62.1.
- 24.2. When cameras are used, all other boats shall be required to carry dummy weights matching the weight of the camera.
- 24.3. No competitor or support team shall use a drone over the racing area.





ADDENDUM A

RRS APPENDIX UF UMPIRED FLEET RACING – NACRA 17 EDITION

Version: October, 2024

Umpired fleet races shall be sailed under The Racing Rules of Sailing as changed by this appendix. Races shall be umpired. The rule changes in UF1 have been approved by World Sailing under Regulation 28.1.5(b) on the condition that only the provided options are used. This appendix applies only when it is referred to in the Notice of Race and made available for all competitors.

UF1. CHANGES TO THE DEFINITIONS, THE RULES OF PART 1 AND 2, AND RULE 70

UF1.1. Add to the definition *Proper Course*: 'A boat taking a penalty or manoeuvring to take a penalty is not sailing a *proper course*.'

UF1.2. Add new rule 7 to Part 1:

7. LAST POINT OF CERTAINTY

The umpires will assume that the state of a boat, or her relationship to another boat, has not changed, until they are certain that it has changed.'

UF1.3. Rule 14 is changed to:

14. AVOIDING CONTACT

14.1 If reasonably possible a boat shall

- (a) avoid contact with another boat,
- (b) not cause contact between boats, and
- (c) not cause contact between a boat and an object that should be avoided.

However, a right-of-way boat, or one sailing within the *room* or *mark-room* to which she is entitled, need not act to avoid contact until it is clear that the other boat is not *keeping clear* or giving *room* or *mark-room*.

UF1.4. When rule 20 applies, the following arm signals are required in addition to the hails:

- (a) for *room* to tack, repeatedly and clearly pointing to windward; and
- (b) for 'You tack', repeatedly and clearly pointing at the other boat and waving the arm to windward.

UF1.5. Rule 70 is deleted.

UF1.6. Spare.

UF2. CHANGES TO OTHER RULES

UF2.1. Rule 28.2 is changed to:

28. SAILING THE COURSE

28.2 A boat may correct any error in *sailing the course*, provided she has not rounded the next mark or crossed the finishing line to *finish*.



UF2.2. Rule 31 is changed to:

31. TOUCHING A MARK

While *racing*, neither the crew nor any part of a boat's hull shall touch a starting *mark* before *starting*, a *mark* that begins, bounds or ends the leg of the course on which she is sailing, or a finishing *mark* after *finishing*. In addition, while *racing*, a boat shall not touch a race committee vessel that is also a *mark*.

UF2.3. Rules P1 to P4 shall not apply.

UF3. ON WATER PROTESTS AND PENALTIES

UF3.1. In this appendix, 'a penalty' will mean a One-Turn Penalty taken in accordance with rule 44.2.

UF3.2. The first sentence of rule 44.1 is changed to:

'A boat may take a penalty when, in an incident while *racing*, she may have broken one or more of the *rules* of Part 2 (except rule 14 when she has caused damage or injury), rule 31 or rule 42. However, when she may have broken a rule of Part 2 and rule 31 in the same incident, she need not take the penalty for breaking rule 31'

UF3.3. On the Water Protests by Boats and Penalties

- (a) While *racing*, a boat may protest another boat under a rule of Part 2 (except rule 14) or under rule 31 or rule 42; however, a boat may only protest under a rule of Part 2 for an incident in which she was involved. To do so she shall hail 'Protest' and conspicuously display a red flag at the first reasonable opportunity for each. She shall remove the flag before, or at the first reasonable opportunity after a boat involved in the incident has taken a penalty voluntarily or after an umpire's decision.
- (b) A boat that protests as provided in rule UF3.3(a) is not entitled to a hearing unless an umpire signals in accordance with UF3.5(d). Instead, a boat involved in the incident may acknowledge breaking a rule by voluntarily taking a penalty. An umpire may penalize any boat that broke a rule and was not exonerated, unless the boat took a penalty voluntarily.

UF3.4. Penalties and Protests Initiated by an Umpire

- (a) When a boat
 - (1) breaks rule 31 and does not take a penalty,
 - (2) breaks rule 42,
 - (3) gains an advantage despite taking a penalty,
 - (4) commits a breach of sportsmanship,
 - (5) fails to comply with rule UF 3.6 or to take a penalty when required to do so by an umpire,
 - (6) fails to comply with rule UF 2.1 (rule 28.2),
 an umpire may penalize her without a protest by another boat. The umpire may impose a penalty or more, each signalled in accordance with rule UF3.5(b) or disqualify her under rule UF3.5(c) or report the incident to the protest committee for further action. If a boat is penalized under rule UF3.4(a)(5) for not taking a penalty or taking a penalty incorrectly, the original penalty is cancelled.
- (b) An umpire who decides, based on his own observation or a report received from any source, that a boat may have broken a rule, other than rule UF3.6 or rule 28 or a rule listed in rule UF3.3(a), may inform the protest committee for its action under rule 60.3. However, he will not inform the protest committee of an alleged breach of rule 14 unless there is damage or injury.

UF3.5. Umpire Signals

An umpire will signal a decision as follows:

- (a) A green and white flag with one long sound means 'No penalty.'





- (b) A red flag with one long sound means 'a penalty is imposed or remains outstanding.' The umpire will hail or signal to identify each such boat.
- (c) A black flag with one long sound means 'A boat is disqualified.' The umpire will hail or signal to identify the boat disqualified.
- (d) A yellow flag with one long sound means 'The umpires do not have the facts required to make a decision.'

UF3.6. Imposed Penalties

- (a) A boat penalized under rule UF3.5(b) shall take a penalty.
- (b) A boat disqualified under UF3.5(c) shall promptly leave the course area.
- (c) If a boat is penalized under rule UF3.4(a)(6), the penalty will be a disqualification under rule UF 3.5(c)

UF4. RACE COMMITTEE ACTIONS

- UF4.1. After boats have finished, the race committee will inform competitors about the results on the official notice board.

UF5. PROTESTS; REQUESTS FOR REDRESS OR REOPENING; APPEALS; OTHER PROCEEDINGS

- UF5.1. No proceedings of any kind may be taken in relation to any action or non-action by an umpire.

- UF5.2. A boat is only entitled to a hearing when the umpires have signalled in accordance with rule UF3.5(d) or under rule UF5.3.

- UF5.3. A boat intending to

- (a) protest another boat under a rule other than rule UF3.6, or a rule listed in rule UF3.3(a),
- (b) protest another boat under rule 14 if there was contact that caused damage or injury, or
- (c) request redress

for incidents that happened in the racing area, shall inform the race committee at the first reasonable opportunity after finishing or retiring, until this is acknowledged by the race committee. In case of a protest, she shall inform of the boat/s being protested. If the boat has to leave the racing area, she shall inform the race committee as soon as possible after arriving ashore.

- UF5.4. The time limit defined in rule UF5.3 also applies to protests under rule UF5.9, UF5.10 and UF5.11 when such protests are permitted. The protest committee shall extend the time limit if there is good reason to do so.

- UF5.5. The race committee will promptly inform the protest committee about any protests or requests for redress made under rule UF5.3.

- UF5.6. The third sentence of rule 61.1(a) and all of rule 61.1(a)(2) are deleted.

- UF5.7. The first three sentences of rule 64.2 are changed to: 'When the protest committee decides that a boat that is a *party* to a protest hearing has broken a rule, it may impose penalties other than disqualification, and may make any other scoring arrangement it decides is equitable. If a boat has broken a *rule* when not *racing*, the protest committee shall decide whether to apply any penalty to the race sailed nearest in time to that of the incident or make some other arrangement.'

- UF5.8. Hearings

- (a) A boat requesting a hearing shall comply with Sailing Instruction 15 HEARING REQUESTS.
- (b) Except for a hearing under rule 69.2, the protest committee may take evidence and conduct the hearing in any way it considers appropriate and may communicate its decision orally.

- UF5.9. Spare



- UF5.10.** The protest committee may protest a boat under rule 60.3. However, it will not protest a boat for breaking rule UF3.6 or rule 28, a rule listed in rule UF3.3(a), or rule 14 unless there is damage or injury.
- UF5.11.** The technical committee will only protest a boat under rule 60.4 when it decides that a boat or personal equipment does not comply with the class rules, rule 50, or the rules in the equipment regulations of the event, if such exist. In such a case, the technical committee shall protest.
- UF5.12.** Rule 66.2 is changed to 'A *party* to the hearing under this appendix may not request a reopening.'





ADDENDUM B COURSE DIAGRAM

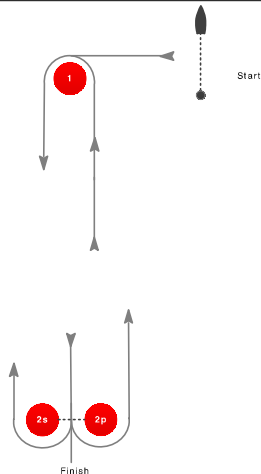
LA	COURSE: WINDWARD / LEEWARD with spreader mark and leeward finish
Signal	Mark Rounding Order
LA2	Start - 1 - 1a - 2s/2p - 1 - 1a - Finish
LA3	Start - 1 - 1a - 2s/2p - 1 - 1a - 2s/2p - 1 - 1a - Finish
LA4	Start - 1 - 1a - 2s/2p - 1 - 1a - 2s/2p - 1 - 1a - 2s/2p - 1 - 1a - Finish



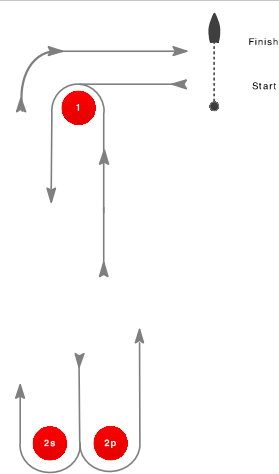
L	COURSE: WINDWARD / LEEWARD
Signal	Mark Rounding Order
L2	Start - 1 - 2s/2p - 1 - Finish
L3	Start - 1 - 2s/2p - 1 - 2s/2p - 1 - Finish
L4	Start - 1 - 2s/2p - 1 - 2s/2p - 1 - 2s/2p - 1 - Finish



RD	REACHING COURSE with downwind finish
Signal	Mark Rounding Order
RD1	Start - 1p - 2s/2p - 1p - Finish between 2s and 2p
RD2	Start - 1p - 2s/2p - 1p - 2s/2p - 1p - Finish between 2s and 2p



RR	REACHING COURSE with reaching finish
Signal	Mark Rounding Order
RR1	Start - 1p - 2s/2p - 1s - Finish
RR2	Start - 1p - 2s/2p - 1p - 2s/2p - 1s - Finish



ADDENDUM C FORMAT OF RACING

The regatta will consist in two Series:

1. Opening Series
2. Final Series: 1 umpired fleet races and Match Racing races

1. OPENING SERIES

- 1.1 The Opening Series will consist of a maximum of 13 races. However, if less than 6 races have been completed all fleets by the end of Day 4, the Opening Series will continue on Day 5.
- 1.2 The Opening Series from Day 1 to Day 4 will be windward/leeward course (LA) or reaching start courses (RR or RD).
- 1.3 For windward/leeward course (LA), there will be only ONE fleet.
- 1.4 For reaching start courses (RR or RD) the boats will be split into TWO fleets of approximately equal numbers of boats.
 - 1.4.1 The Organising Authority will make initial fleet assignments on the basis of the top 50 ranked boats from the 2024 World Championship, with the remainder being taken in numerical order of sail numbers. The method of assignment to fleets will be as per below. The ranking will remain in force until the end of the day during which the 2nd Opening Race is completed by all fleets.
 - 1.4.2 If all fleets have completed the same number of races, boats will be reassigned to fleets on the basis of their Opening Series scores as detailed below. If all fleets have not completed the same number of races by the end of a day, the fleets with fewer races will continue racing the following day until all fleets have completed the same number of races. However, the reassignments will be calculated for those races, numbered in order of completion, completed by all fleets. Reassignments will be made as below.
 - 1.4.3 If at the end of the Day 4, some boats have more race scores than others, scores for those boats most recent races will be excluded so that all boats have the same number of race scores.

Reassignments will be made as follows:

Place in Opening Series Fleet assignment

First Yellow

Second Blue

Third Blue

Fourth Yellow

and so on

Fleet assignments will be based on the ranking available at 2000 that day regardless of protests or requests for redress not yet decided.

2. FINAL SERIES (Day 5)

2.1 Umpired fleet race: 1 race.

2.2 Match Racing races

- 2.2.1 The Match Racing Series will be L course and consist of a maximum of TWO races.
- 2.2.2 The first TWO boats overall ranked from the Opening Series shall advance to the Match Racing Series.
- 2.2.3 The first ranked boat in the Opening Series shall receive one point.
- 2.2.4 The first boat ranked in the Opening Series will be assigned the port end of the entry line. The second boat in the Opening Series will be assigned the starboard end of the entry line. They will alternate assigned ends for each match.





- 2.2.5 The first boat to score at least 2 points in the Match Racing Series shall be awarded first place and the other boat the second place.

ADDENDUM D

SUPPORT VESSEL REGULATIONS

Support Vessels shall carry the following Equipment on board

- Life jackets / buoyance aids for the driver and all passengers,
- Engine kill cord (also known as a safety lanyard or automatic engine immobiliser) with a spare kill cord on the support vessel
- VHF radio capable of receiving instruction from Safety or Race Committee
- First-aid kit
- Device for making a sound signal
- Compass
- Adequate anchor and tackle for conditions and depth
- Tow rope (minimum 15m long and 10mm thick)
- Knife

Support Vessel Regulations

- Support Vessels shall be registered with the Organising Authority and shall be marked with their applicable national sail letters clearly displayed, the minimum height for these letters is 200mm.
- Support Vessels shall comply with all local regulations.
- Support Vessels shall follow Race Committee instructions on the designated VHF channel.
- Kill cords shall be worn at all times when the engine is running.
- Life jackets / buoyance aids - it is recommended that they are worn at all times when afloat and shall be worn in winds of over 10 knots or when motoring at more than 10 knots.
- Support vessels shall not be positioned, except during rescue operations.
 - Closer than 100 metres of any boat racing.
 - Within 100 metres to leeward of the starting line and its extensions from the warning signal until all boats have left the starting area. or the race committee signals a postponement, general recall or abandonment.
 - Within 100 metres of any mark of the course while boats are in the vicinity of that mark.
 - Within 100 metres of the finishing line while boats are finishing.
 - In addition, support vessels that are motoring above 5 knots shall remain at least 150 metres from any boat racing.



ADDENDUM E STANDARD PENALTIES

RACE COMMITTEE STANDARD PENALTIES (SP)

In accordance with SI 14.3, the Race Committee will apply the following Standard Penalties:

SI	IDENTIFICATION	
23.2	Not wearing bib	First offence €20 contribution to charity. Subsequent offences DP
SI	SIGNALS MADE ASHORE	
5.2	Leaving before flag D is displayed ashore	First offence €20 contribution to charity. Subsequent offences DP
SI	THE FINISH	
13.2	Not leaving the Finishing Exclusion Zone	First offence €20 contribution to charity. Subsequent offences DP
SI	SAFETY	
19.1	Not informing the race office or race committee	First offence €20 contribution to charity. Subsequent offences DP

